



Design For Manufacture

Driven by Dependability

Customer:

Contact:

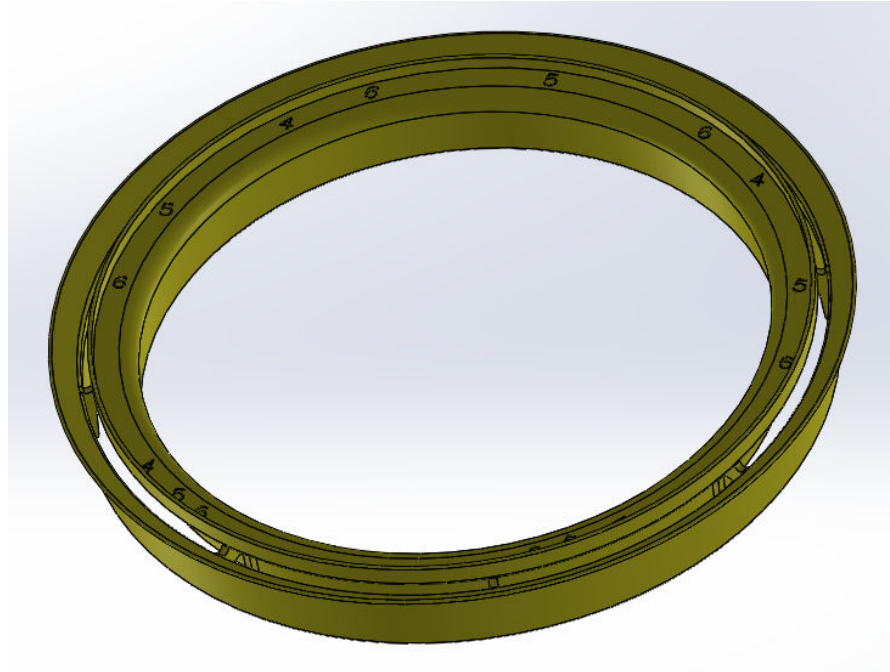
Quote #:

Package Name:

Part Name:

Date:

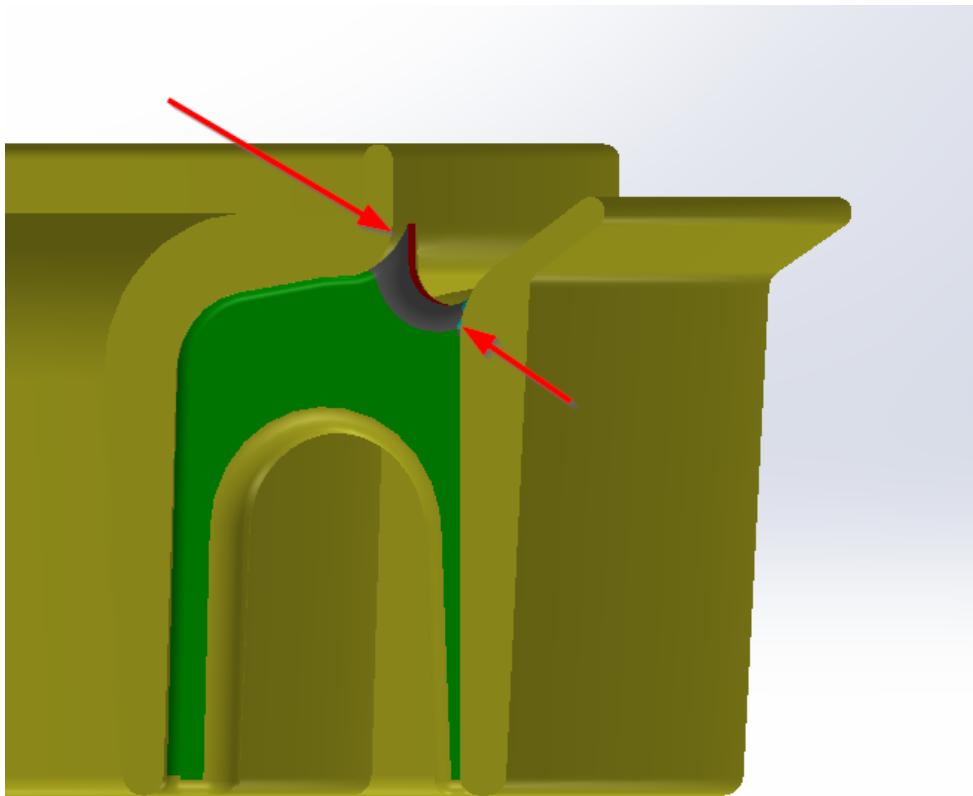
Report by:





Driven by Dependability

Design For Manufacture



Parting lines must be located at the apex of the part geometry. In this case it is approx. the tangency of the radii

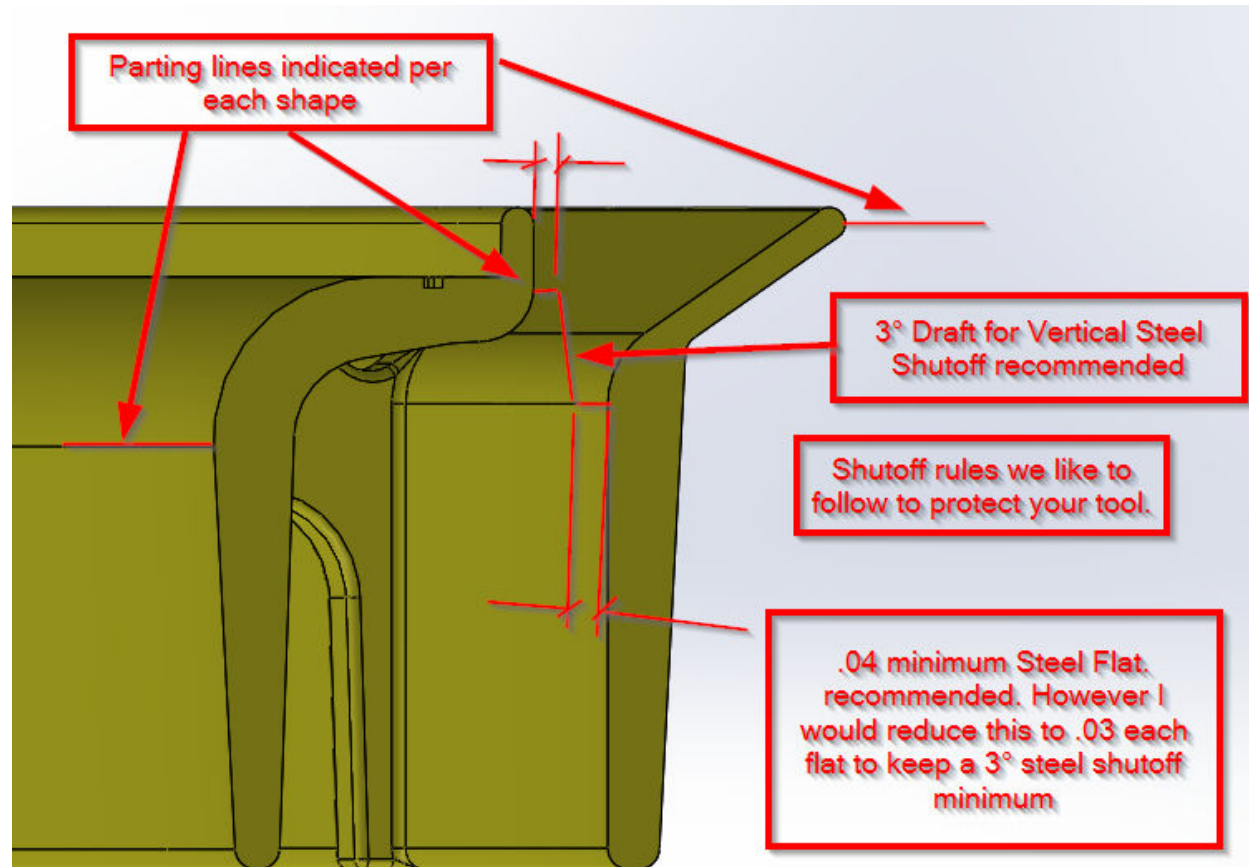
Suggest removing the Radii on the top of the cross ribs

Design For Manufacture

Driven by Dependability

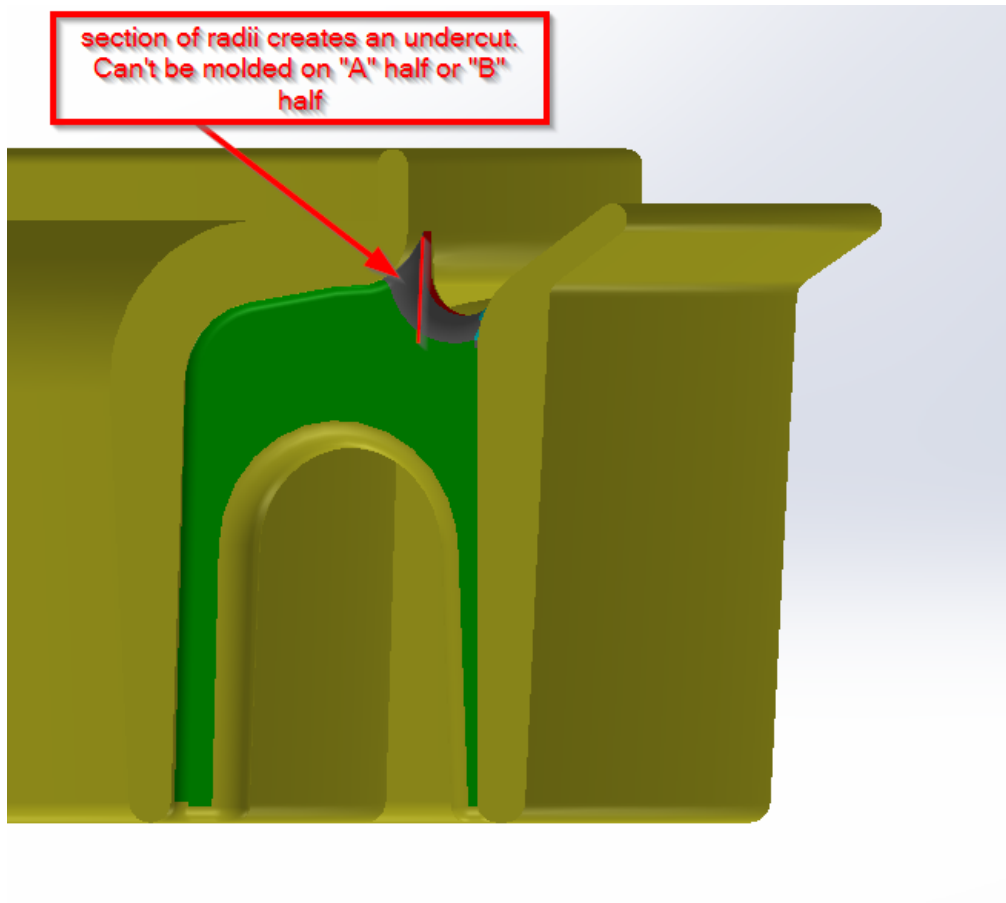
Design for Manufacture Pictures

Suggest
tool
shutoff
that
protects
the tool.
Lets
discuss for
further
details



Driven by Dependability

Design for Manufacture Pictures



Gray Surfaces
should follow
the Steel
shutoff
parting line
shown on
slide 3

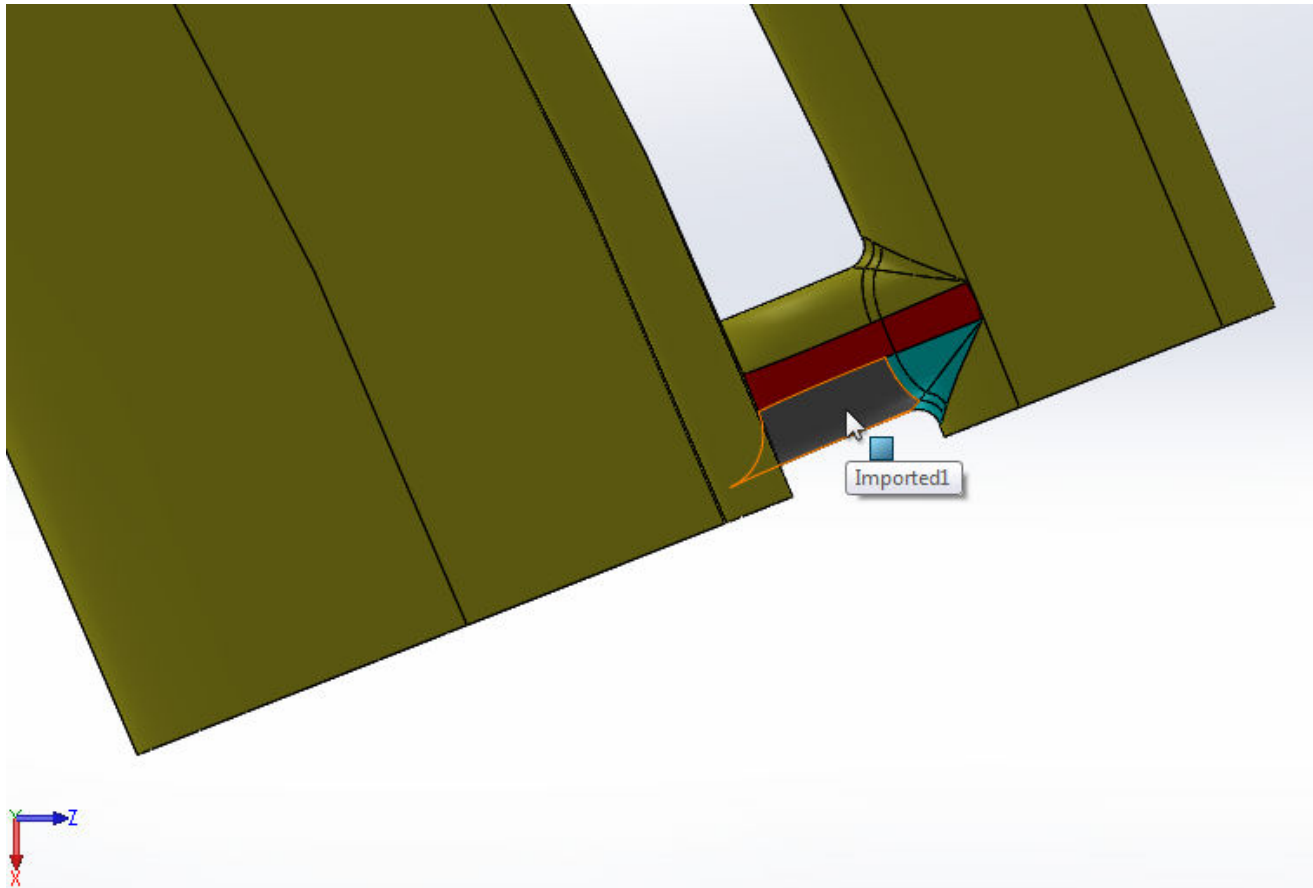


Design For Manufacture

Driven by Dependability

Design for Manufacture Pictures

Grey Radii is shown tucked under the part geometry

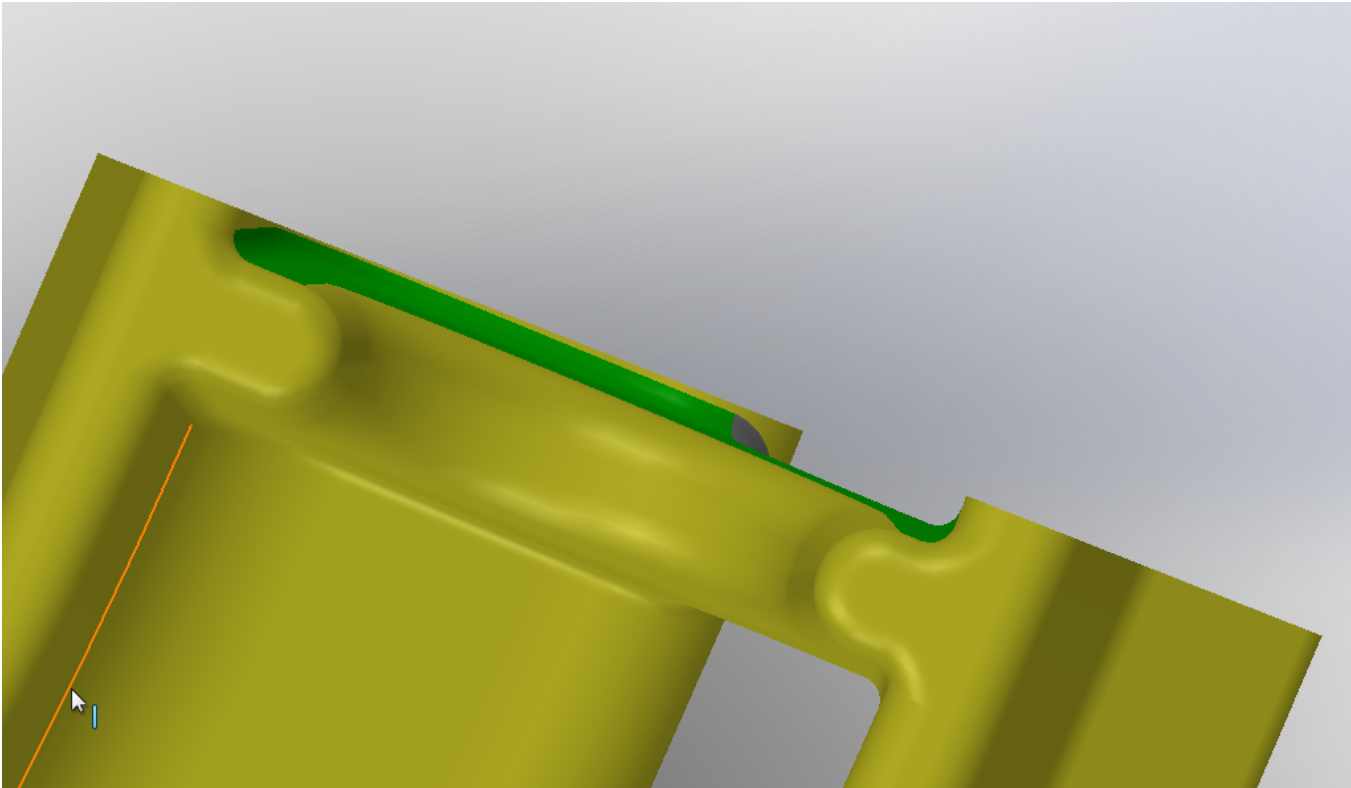




Design For Manufacture

Driven by Dependability

Design for Manufacture Pictures

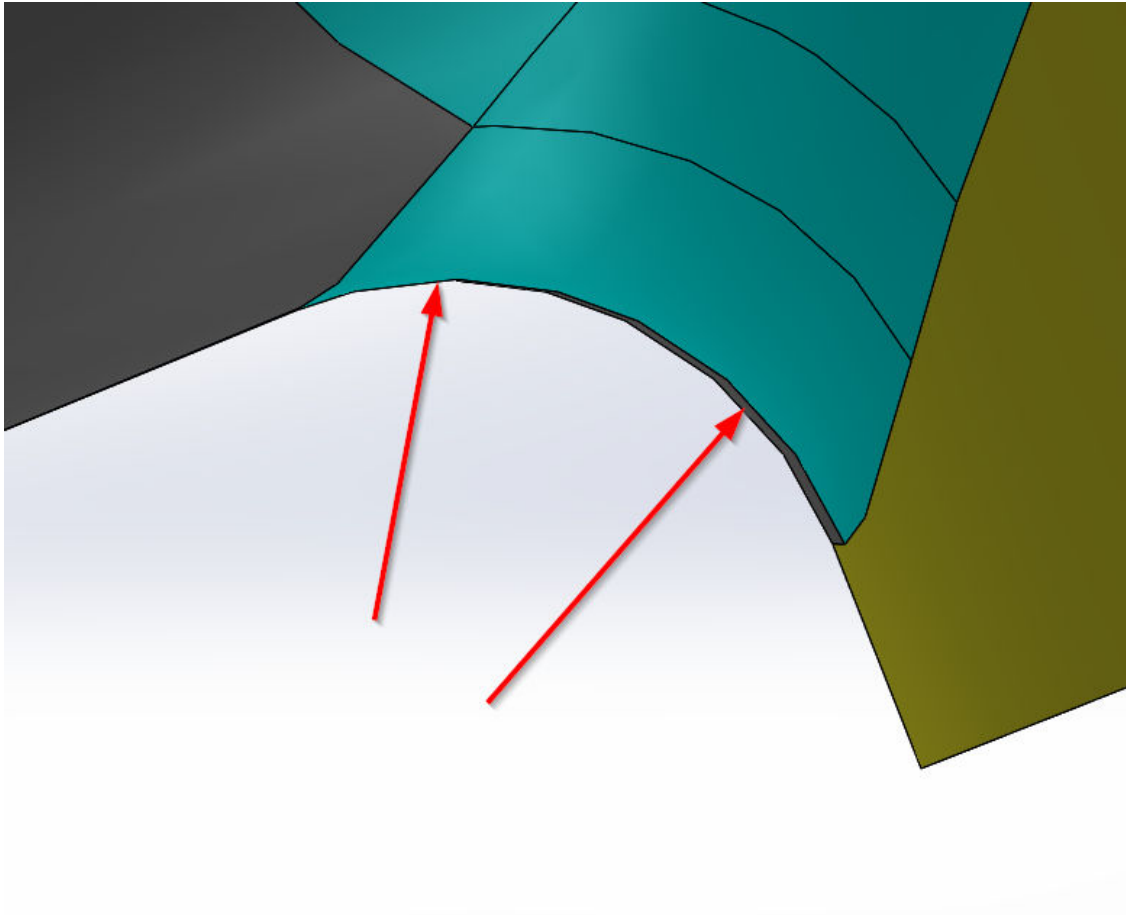




Design For Manufacture

Driven by Dependability

Design for Manufacture Pictures



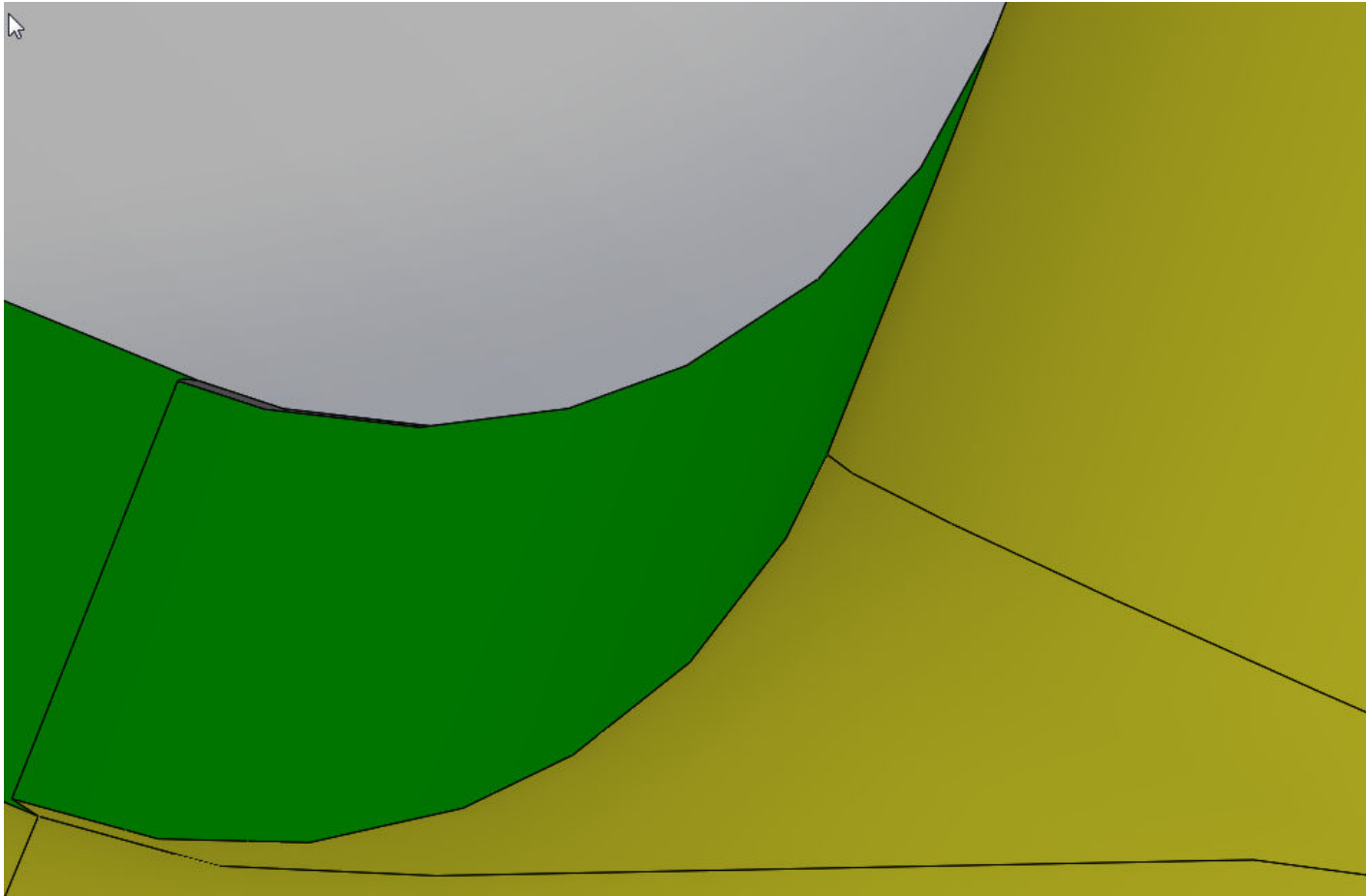
Patch Radii
Surface get
twisted.



Design For Manufacture

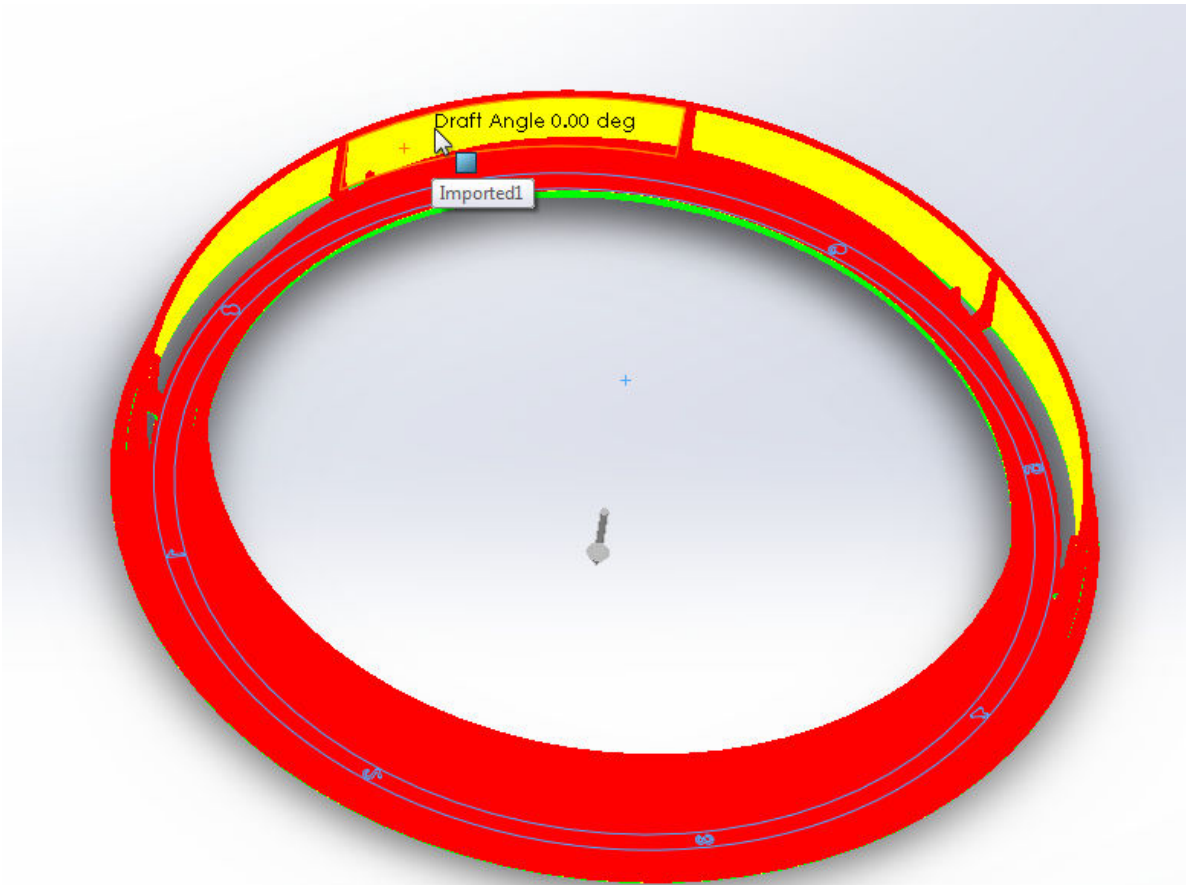
Driven by Dependability

Design for Manufacture Pictures



Driven by Dependability

Design for Manufacture Pictures



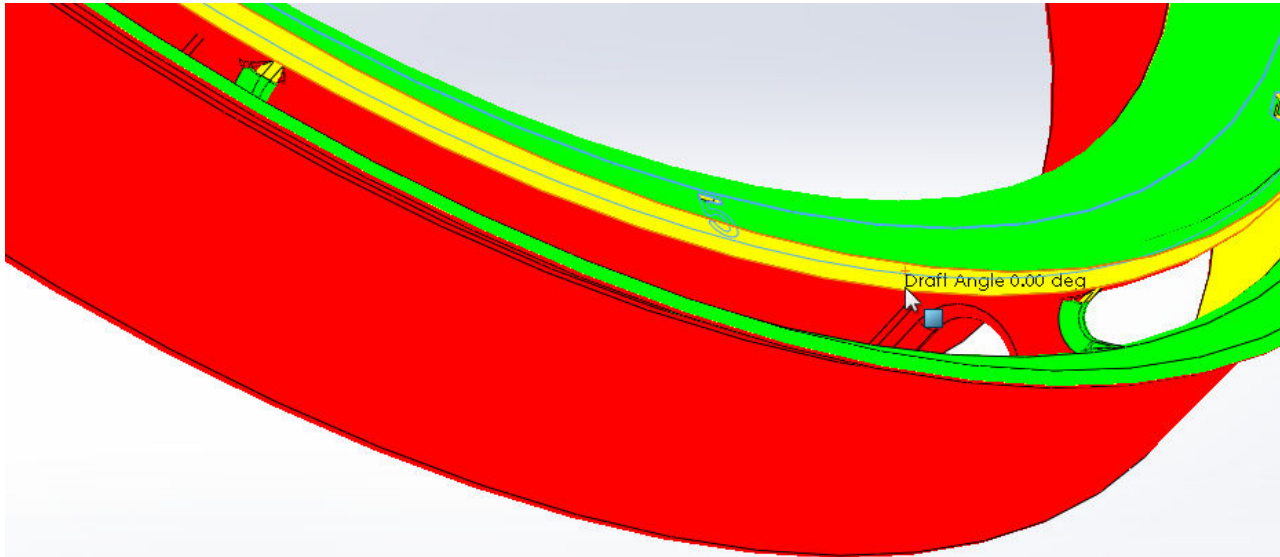
Suggest adding
1° draft. To
Yellow surfaces
($\frac{1}{2}^\circ$ minimum)



Design For Manufacture

Driven by Dependability

Design for Manufacture Pictures



Suggest adding
1° draft. To
Yellow surfaces
(½° minimum)



Design For Manufacture

Driven by Dependability

Draft Analysis

Is draft sufficient for normal part processing? **No**

Is draft sufficient for texture release? **N/A**

Will undercuts be necessary for processing? **No**

Gate Location

Are there any gate location restrictions that would affect tooling quotes/design? **Edge gate or Sub Gate into inside Side wall**

Wall Thickness

Does the part have Uniform Wall or Non-uniform Walls? **No**

Impact to Cycle time? **Little impact**

Impact to part Quality? **Concern in meeting dimensional Tolerances.**

•



Design For Manufacture

Driven by Dependability

Appearance Part

Is this an appearance part? **No**

If so, will Gate Trimming be acceptable in proposed location?

Notes

Is 3D part file fully drafted? **No**

Is the customer relying on “Draft by note”? **No, will expect to get fully drafted 3D part file prior to Tool Build.**

Will any drafting allowed by note affect Fit or Function of part in assembly? **N/A**

Tolerance

Can we expect to meet tolerances? **Tolerance is of concern at this stage. Would recommend removing the Profile tolerance**

Do we need to request “inspection under constraint”? **Yes, Please allow parts to be inspected with some restraint.**



Design For Manufacture

Driven by Dependability

Quality Assurance

Has Inspection Drawings been Reviewed by Aero-Plastics QA? **Yes**

Secondary operations

Will processing support secondary processes (i.e. painting, U/S inserting, assembly)? **N/A**

Supply Chain

Are materials single sourced? **No**

Is production under “minimum material” requirements?

Do any materials have long lead-times? **No**